

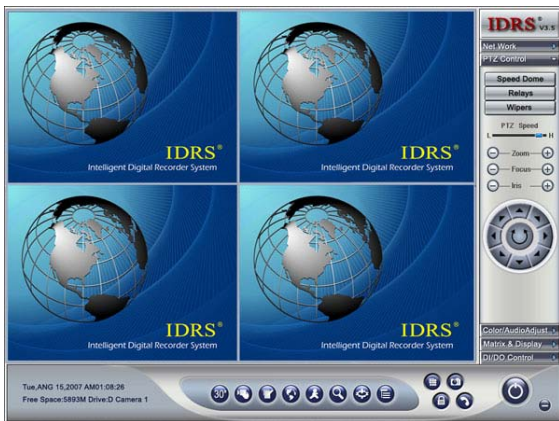
# PC Based DVRs

## PC Based DVRs

### NOTES:

CD-RW / DVD-RAM is available

Display is excluded in standard configuration



HSWCHD series interface



HEHES series interface

## Product Form

PC Based DVRs = PC + H.264 Recorder card + PC Based DVR Server Software

## New Features

### IP Camera Application (Hybrid DVR)

- The IDRS Surveillance System is able to process video signals from IP cameras or DVS over TCP/IP network, you can easily integrate surveillance system and IP cameras, and load analog and digital video data into the same interface to become a comprehensive hybrid solution.

### Mobile Phone Application

- Support single image displaying
- Support image channel selection
- Support PTZ control (arrow keys operation)
- Mobile phone function requirements: (1)Support JAVA CLDC 1.1/MIDP 2.0, (2)Have opened services of GPRS/CDMA

### **POS(Point of sales) Function (IDRS-6000S-HS/HC/HD series)**

- Add POS text on image
- Customize POS text font and character adding position on screen and video files.
- One DVR supports max. 16 POS (RS232 interface) and 32 POS (network interface) together.
- Single video search and transmitted data addition search optional. Search mode: receipt content, start time and camera number, etc.
- Text filter: display the video files of keywords related, skipping the unrelated.
- All transaction logs are saved in Microsoft Access for later use.
- Unusual transaction alarm: When pre-fixed unusual transactions appear, system will alarm.

### **Dual display for monitoring (IDRS-6000S-HS/HC/HD series)**

- Support for stretch monitoring on two displays.
- Support for numerous dual display modes: Preview dual display, preview & set dual display, preview & playback dual display, etc.

### **DVD/CD Burning**

- Support CD-RW / DVD-RAM burn.
- No need support of third-party software

## **Product Features**

### **Video Compression**

- H.264 hardware compression, low HDD occupation
- Video standard PAL/NTSC
- Compression resolution QCIF, CIF, 2CIF, DCIF,4CIF, video bit rate 32K-8Mbps
- Dynamic adjust code parameter, Includes video bit rate, frame rate and image quality
- Dual-stream technology
- Motion detection (up to 12 detection zones per channel)
- Digital Watermark technology
- IP Camera and DVS can be added into PC Based DVR through network(Hybrid)

### **Display and preview**

- Up to 64 channel video input
- Preview resolution: 4CIF
- Real Time Display (30 FPS)
- Multiple screen partition modes: 1, 4, 9, 13, 16, 20, 25, 28, 33, 36, 40, 49, 64
- Group display function
- Matrix video output--use decoder card to output single or multi-quads video on the monitors
- Video lost detection
- Full screen view
- Dual operation for live monitoring and playback on two monitors(use special mother board)

- E-map pop-ups on alarm activation
- Hard disk free spaces indicator
- Synchronized video and audio
- Color adjustment for light, contrast, hue and saturation

### **Recording**

- Real time high-speed recording: Up to 30 fps per channel
- Variable recording speed
- Multiple recording modes: manual , motion detection, alarm, scheduled recording
- Set image quality and frame rate for each camera
- Pre-motion and post-motion recording
- Duplex mode (Recording while playback)

### **Playback**

- Playback by date, time, camera name and record format
- Supports up to 16 channels playback at the same time
- Instant search and zone search.
- Object search
- Synchronized audio and video for both live and playback modes
- Export a video footage within a specified time range and playable with special player

### **Audio**

- Up to 64 channel audio input
- Synchronous audio recording (optional)

### **Alarm and I/O Control**

- Support 32 channels sensor input and 32 channels alarm output(with alarm box)
- Screen displays electronic map which shows related position when alarm
- Alarm Log
- Pre-Recording when alarm
- Send alarm message to NVR Client automatically
- Send alarm image to email box as attachment automatically

### **Storage and Backup**

- Up to 10 HDDs expandable
- Support USB mobile storage
- Support burning DVD/CD directly and image capture
- Can make use of special software to convert recording document into AVI format

### **P/T/Z and speed dome control**

- RS422/RS485 control PTZ and light/power/wiper
- PTZ & speed dome control by keyboard or mouse

- Setup and call preset position of speed dome

### Authority management and system protection

- Multi level passwords protection
- Watchdog and lock-keyboard function
- Keyboard Lock (Hotkey)
- System log
- Automatic restart when electricity is restored again

### Network

- Support dynamic IP address, ADSL (PPPoE) dialup and DNS protocol
- Web access through LAN or WAN
- Live view via IE browser
- Remote view or control PTZ via Mobile Phone
- Remote view, recording and remote search
- Remote playback
- Remote talking between DVR and client or DVR and DVR
- Remote control PTZ and speed dome
- Remote setup and manage DVRs via net
- IP Multicast
- Receive alarm message and associated video of DVRs
- Remote control alarm output
- Remote check system log

### Interrelated Software

- IDRS- PC Based DVRs Server Software
- IDRS- NVR Client software
- IDRS- NVMS
- IE Browser (Web function)

### Specifications

System	OS	Windows 2000 / Windows XP / Vista
	Language	Chinese/English
	CPU	Intel Dual Core Processor 2.0GHz
	Main Memory	1GB DDR
	Hard Disk	320GB
	VGA	64MB
Video	Compression	H.264

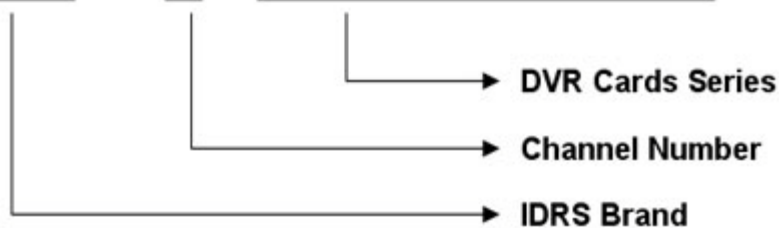
	Video Input Channel	Max 64 CH	
	Input Connector	BNC	
	VGA Output	1, 1024X768	
	Signal Format	PAL/NTSC	
Preview	Display Speed	NTSC 30 FPS/Channel , PAL 25 FPS/Channel	
	Preview Resolution	1024X768	
	Display Mode	1, 4, 9, 13, 16, 20, 25, 28, 33, 36, 40, 49, 64	
	Cycle Display	single or multi pictures switch in time, Cycle time adjustable	
	Group view	1-16 groups	
		1, 4, 9, 13, 16, 20, 25, 28, 33, 36, 40, 49, 64	
	Picture adjustment	Brightness, contrast, hue and saturation	
	Superimposed images	Character, Date, Watermark	
Image Hide	partly hide or whole hide		
Recording	Recording Speed	NTSC 30 FPS/Channel , PAL 25 FPS/Channel	
	Image Resolution	4CIF:704X576(PAL), 704X480(NTSC) DCIF:528X384(PAL), 528X320(NTSC) 2CIF:704X288(PAL),704X240(NTSC) CIF:352X88(PAL), 352X240(NTSC) QCIF:176X144(PAL), 176X120(NTSC)	
		Quality	Best(350–500M/H), better(250–350M/H), normal(100–250M/H), worse(50–150M/H), worst(40–80M/H)
		Storage time	programmable backup time or auto overwrite when disk is full
		Recording model	Audio and video / video
		Recording type	consecutive recording, motion recording, sensor recording etc
Playback	Resolution	same as the recording resolution	
	Picture Dimensions	800X600,1024X768	
	Search	By date, camera name, record format, time line, specific zone	
	Simultaneous	single, 4 channels, 9 channels, 16 channels	
	Speed	normal, 1-4x fast, 1-4x slow, single frame, image freeze, time jump	
	Control	play, pause, stop, next frame, previous frame, next minute, previous minute	
	Other	specific zone, snapshot	
Digital	Output Connector	BNC	

Matrix	Matrix Group	1—16
	Output Split	1,2,4,9,13,16
	Auto switch time	3—30s
Audio	Input	64 channels max.
	Input Connector	BNC, line in
Alarm (Optional)	Sensor Input	8/16/32 NO/NC
	Control Output	8/16/32 NO/NC
	Output control	Manual control, alarm input linkage control
	Alarming	Buzzer, WAV
	Others	Auto send the snapshot to; the Designated email address when alarm
Map shows when in alarm and show the position located		
Electronic MAP		Change map, add sensor or camera, delete all
PTZ	PTZ control	P/T: Up, down, left, right; Iris: forward and backward, focus, iris control
	Speed Dome control	Direction control and lens forward, focus and iris control, Adjust speed, the installation and use of pre-set positions, automatic scanning, Alarm prefabricated etc.
	Adds-on	Light wiper
Network	Ports	1 RJ45, auto 10M/100M internet interface
	Client(C/S)	max camera windows 25(1, 4, 9, 16, 25)
		Real-time monitor, backup, remote playback, control camera's P/T/Z, receive alarm, remote control alarm output, remote setup. group switch, check system log
IE(B/S)	Monitoring, Pan/Tilt/Zoom, remote playback and local manual backup.	
Dialogue		bidirectional voice dialogue
Log		System log, Alarm log, operating log
HDD Quantity		Up to 10 HDDs expandable
Backup	HDD, CD-RW, DVD-RAM, USB	
	Video clips, many of Synthesis	
	Capture, Storage, Click and Print, generated BMP images	
Access Restrictions	Multi-lever user management	
	Keyword lock and interface lock	
	Water Mark Proof	

Power supply	AC220V
Working Temp	-10°C~+55°C
working Humidity	10%~90%
Dimensions	19 inch Standard(505* 441* 178 mm)

## Model Description:

IDRS - 60xxS- HS (HC/HD/HDF/HES/HE)



## Products Model

HS Series (QCIF/CIF encoding and single stream)			
DVR Channels	Models	Recording resolution	Stream type and display
8 Channels	IDRS-6008S-HS	QCIF/CIF(Real-time)	Single Stream, Dual display operation
16 Channels	IDRS-6016S-HS	QCIF/CIF(Real-time)	Single Stream, Dual display operation
24 Channels	IDRS-6024S-HS	QCIF/CIF(Real-time)	Single Stream, Dual display operation
32 Channels	IDRS-6032S-HS	QCIF/CIF(Real-time)	Single Stream, Dual display operation
40 Channels	IDRS-6040S-HS	QCIF/CIF(Real-time)	Single Stream, Dual display operation
48 Channels	IDRS-6048S-HS	QCIF/CIF(Real-time)	Single Stream, Dual display operation
HC/HD/HDF Series (QCIF/CIF/DCIF/4CIF encoding and dual stream)			
DVR Channels	Models	Recording resolution	Stream type and display
4 Channels	IDRS-6004S-HC	QCIF/CIF/DCIF(Real-time),4CIF(PAL:1 0~12fps,NTSC:12~15fps)	Dual Stream, Dual display operation
8 Channels	IDRS-6008S-HC	QCIF/CIF/DCIF(Real-time),4CIF(PAL:1 0~12fps,NTSC:12~15fps)	Dual Stream, Dual display operation
12 Channels	IDRS-6012S-HC	QCIF/CIF/DCIF(Real-time),4CIF(PAL:1 0~12fps,NTSC:12~15fps)	Dual Stream, Dual display operation
16 Channels	IDRS-6016S-HC	QCIF/CIF/DCIF(Real-time),4CIF(PAL:1 0~12fps,NTSC:12~15fps)	Dual Stream, Dual display operation
20 Channels	IDRS-6020S-HC	QCIF/CIF/DCIF(Real-time),4CIF(PAL:1 0~12fps,NTSC:12~15fps)	Dual Stream, Dual display operation

24 Channels	IDRS-6024S-HC	QCIF/CIF/DCIF(Real-time),4CIF(PAL:1 0~12fps,NTSC:12~15fps)	Dual Stream, Dual display operation
28 Channels	IDRS-6028S-HC	QCIF/CIF/DCIF(Real-time),4CIF(PAL:1 0~12fps,NTSC:12~15fps)	Dual Stream, Dual display operation
32 Channels	IDRS-6032S-HC	QCIF/CIF/DCIF(Real-time),4CIF(PAL:1 0~12fps,NTSC:12~15fps)	Dual Stream, Dual display operation
36 Channels	IDRS-6036S-HC	QCIF/CIF/DCIF(Real-time),4CIF(PAL:1 0~12fps,NTSC:12~15fps)	Dual Stream, Dual display operation
40 Channels	IDRS-6040S-HC	QCIF/CIF/DCIF(Real-time),4CIF(PAL:1 0~12fps,NTSC:12~15fps)	Dual Stream, Dual display operation
44 Channels	IDRS-6044S-HC	QCIF/CIF/DCIF(Real-time),4CIF(PAL:1 0~12fps,NTSC:12~15fps)	Dual Stream, Dual display operation
48 Channels	IDRS-6048S-HC	QCIF/CIF/DCIF(Real-time),4CIF(PAL:1 0~12fps,NTSC:12~15fps)	Dual Stream, Dual display operation
4 Channels	IDRS-6004S-HD	QCIF/CIF/DCIF/4CIF(Real-time)	Dual Stream, Dual display operation
8 Channels	IDRS-6008S-HD	QCIF/CIF/DCIF/4CIF(Real-time)	Dual Stream, Dual display operation
12 Channels	IDRS-6012S-HD	QCIF/CIF/DCIF/4CIF(Real-time)	Dual Stream, Dual display operation
16 Channels	IDRS-6016S-HD	QCIF/CIF/DCIF/4CIF(Real-time)	Dual Stream, Dual display operation
20 Channels	IDRS-6020S-HD	QCIF/CIF/DCIF/4CIF(Real-time)	Dual Stream, Dual display operation
24 Channels	IDRS-6024S-HD	QCIF/CIF/DCIF/4CIF(Real-time)	Dual Stream, Dual display operation
HES Series (CIF encoding and dual stream)			
DVR Channels	Models	Recording resolution	Stream type and display
8 Channels	IDRS-6008S-HES	CIF(Real-time)	Dual Stream, Single display operation
16 Channels	IDRS-6016S-HES	CIF(Real-time)	Dual Stream, Single display operation
24 Channels	IDRS-6024S-HES	CIF(Real-time)	Dual Stream, Single display operation
32 Channels	IDRS-6032S-HES	CIF(Real-time)	Dual Stream, Single display operation
HE Series (CIF/4CIF encoding and dual stream)			
DVR Channels	Models	Recording resolution	Stream type and display
4 Channels	IDRS-6004S-HE	CIF/2CIF(Real-time),4CIF(PAL:10~12fp s,NTSC:12~15fps)	Dual Stream, Single display operation
8 Channels	IDRS-6008S-HE	CIF/2CIF(Real-time),4CIF(PAL:10~12fp s,NTSC:12~15fps)	Dual Stream, Single display operation

12 Channels	IDRS-6012S-HE	CIF/2CIF(Real-time),4CIF(PAL:10~12fps,NTSC:12~15fps)	Dual Stream, Single display operation
16 Channels	IDRS-6016S-HE	CIF/2CIF(Real-time),4CIF(PAL:10~12fps,NTSC:12~15fps)	Dual Stream, Single display operation
20 Channels	IDRS-6020S-HE	CIF/2CIF(Real-time),4CIF(PAL:10~12fps,NTSC:12~15fps)	Dual Stream, Single display operation
24 Channels	IDRS-6024S-HE	CIF/2CIF(Real-time),4CIF(PAL:10~12fps,NTSC:12~15fps)	Dual Stream, Single display operation
28 Channels	IDRS-6028S-HE	CIF/2CIF(Real-time),4CIF(PAL:10~12fps,NTSC:12~15fps)	Dual Stream, Single display operation
32 Channels	IDRS-6032S-HE	CIF/2CIF(Real-time),4CIF(PAL:10~12fps,NTSC:12~15fps)	Dual Stream, Single display operation
36 Channels	IDRS-6036S-HE	CIF/2CIF(Real-time),4CIF(PAL:10~12fps,NTSC:12~15fps)	Dual Stream, Single display operation
40 Channels	IDRS-6040S-HE	CIF/2CIF(Real-time),4CIF(PAL:10~12fps,NTSC:12~15fps)	Dual Stream, Single display operation
44 Channels	IDRS-6044S-HE	CIF/2CIF(Real-time),4CIF(PAL:10~12fps,NTSC:12~15fps)	Dual Stream, Single display operation
48 Channels	IDRS-6048S-HE	CIF/2CIF(Real-time),4CIF(PAL:10~12fps,NTSC:12~15fps)	Dual Stream, Single display operation
52 Channels	IDRS-6052S-HE	CIF/2CIF(Real-time),4CIF(PAL:10~12fps,NTSC:12~15fps)	Dual Stream, Single display operation
56 Channels	IDRS-6056S-HE	CIF/2CIF(Real-time),4CIF(PAL:10~12fps,NTSC:12~15fps)	Dual Stream, Single display operation
64 Channels	IDRS-6064S-HE	CIF/2CIF(Real-time),4CIF(PAL:10~12fps,NTSC:12~15fps)	Dual Stream, Single display operation

[Illustrative diagram](#)

# IDRS SURVEILLANCE SYSTEM

